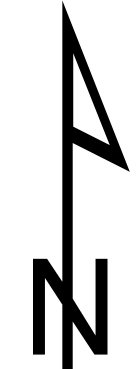
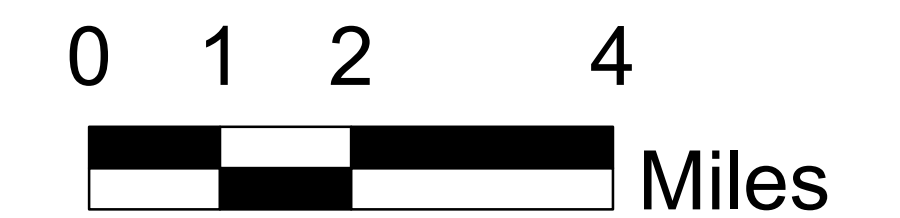


# Benton County High Water Map

Benton County Public Works  
 360 SW Avery Avenue  
 Corvallis, Oregon 97333-1192  
 PHONE: (541) 766-6821  
 FAX: (541) 766-6891  
 BENTON COUNTY ROAD MAP  
 (WALLMAP SERIES)  
 LOCATIONS ARE APPROXIMATE  
 S:\maps\TRANS\Apurtnances\HW\_map.mxd  
 REVISED:11/15/2012  
 Saved: 11/15/2012



**LEGEND**

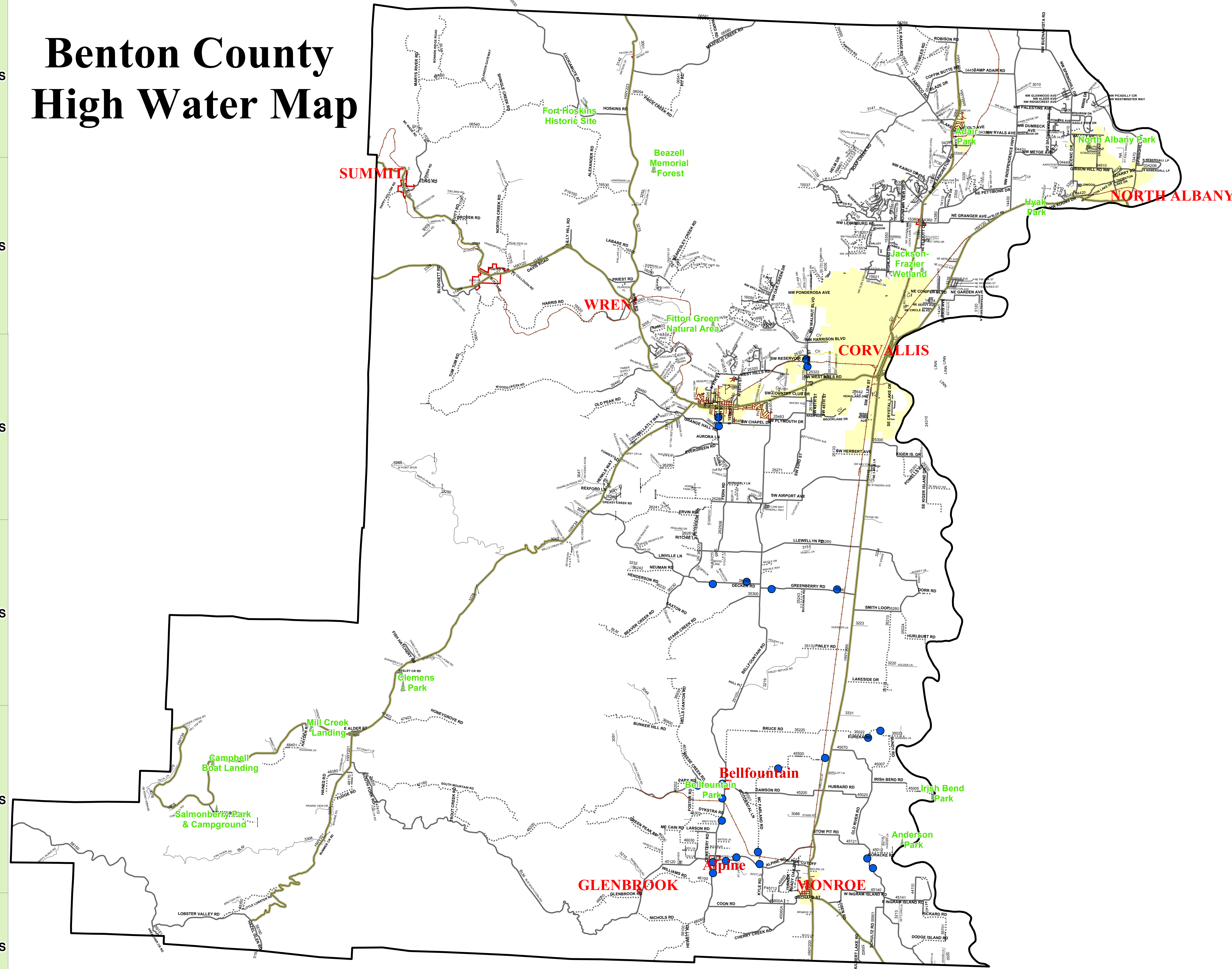
- High Water
- County Boundary
- Section Line
- Township Line
- County Park
- Gates
- Railroads
- Water

**Roads**

- State Highway
- Paved
- City
- Seasonal
- Gated Road
- Gravel
- Forest or Driveway
- Private

**Cities**

- Area
- City
- Community



T10S  
T11S  
T12S  
T13S  
T14S  
T15S

T10S  
T11S  
T12S  
T13S  
T14S  
T15S

R9W R8W R7W R6W R5W R4W R3W